

Lily

1/10" uni saxony

100% solution dyed
PA IMPREL® FINESSE

PODKŁAD
Twinback

WYSOKOŚĆ RUNA
± 5,5 mm

WYSOKOŚĆ CAŁKOWITA
± 8,5 mm

WAGA RUNA
± 935 g/m²

WAGA CAŁKOWITA
± 1.900 g/m²

ILOŚĆ PUNKTÓW /M²
± 201 500

ODPORNOŚĆ NA ŚWIATŁO
≥ 7

ODPORNOŚĆ KOLORU NA WODĘ
≥ 4-5

OPÓR CIEPLNY
± 0,14 m² K/W

KLASA PALNOŚCI
Cfl-s1 (EN 13501-1)

tylko po przyklejeniu na całej
powierzchni

1/10" saxony uni

100% solution dyed
PA IMPREL® FINESSE

DOSSIER
Twinback

HAUTEUR DU VELOURS
± 5,5 mm

HAUTEUR TOTALE
± 8,5 mm

POIDS DU VELOURS
± 935 g/m²

POIDS TOTAL
± 1.900 g/m²

NOMBRE DE POINTS/M²
± 201 500

RÉSISTANCE À LA LUMIÈRE
≥ 7

RÉSISTANCE À L'EAU
≥ 4-5

RÉSISTANCE THERMIQUE
± 0,147 m² K/W

CLASSEMENT FEU
Cfl-s1 (EN 13501-1)

1/10" Uni-Saxony

100% solution dyed
PA IMPREL® FINESSE

RÜCKEN
Twinback

POLHÖHE
± 5,5 mm

GESAMTHÖHE
± 8,5 mm

POLGEWICHT
± 935 g/m²

GESAMTGEWICHT
± 1.900 g/m²

NOPPEN/M²
± 201 500

LICHTTECHTHEIT
≥ 7

WASSERRECHTHEIT
≥ 4-5

WÄRMEDURCHLASSWIDERST.
± 0,147 m² K/W

BRANDKLASSE
Cfl-s1 (EN 13501-1)

1/10" plain saxony

100% solution dyed
PA IMPREL® FINESSE

BACKING
Twinback

PILE HEIGHT
± 5,5 mm

TOTAL HEIGHT
± 8,5 mm

PILE WEIGHT
± 935 g/m²

TOTAL WEIGHT
± 1.900 g/m²

TUFT DENSITY/M²
± 201 500

LIGHT FASTNESS
≥ 7

WATER RESISTANCE
≥ 4-5

THERMAL RESISTANCE
± 0,147 m² K/W

FIRE CLASS
Cfl-s1 (EN 13501-1)
if glued

EN14041
CE
19
Balta Industries - Kanegem-
straat 15 - BE 8700 Tielt
DOP: 1011#IE00CV
Textile Floor Covering EN 1307
Notified body 2401
www.baltamedia.com



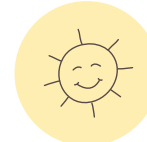
REG. NR
CAA853D3
www.pro-dis.info



10 YEARS
STAIN-FREE



20 YEARS
WEAR WARRANTY



INFINITE
LIGHT FASTNESS



EVERLASTING
SOFTNESS



ETERNAL BLEACH
CLEANABILITY



27	30	33	35	37	43	47	63	74	77	86	90	93	95	96	97	98
ca 4m

Lily



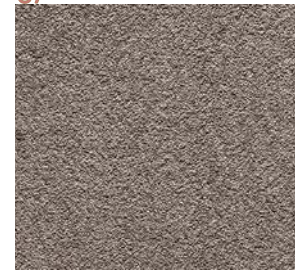
63



33



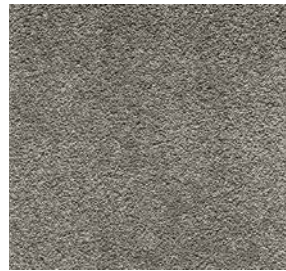
37



43



47



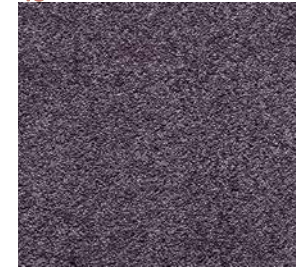
93



90



30



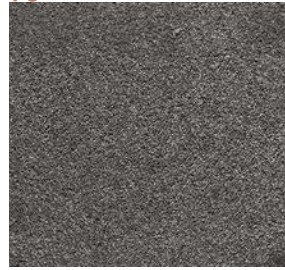
86



98



97



96



35



77



74



27



95